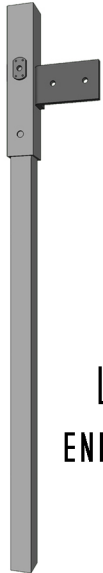
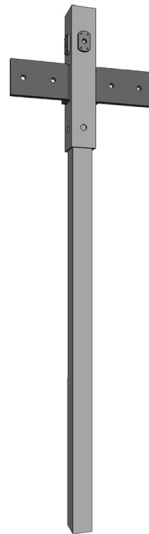


SUI.2 ASSEMBLY INSTRUCTIONS - PARTS PAGE

2" RAIL



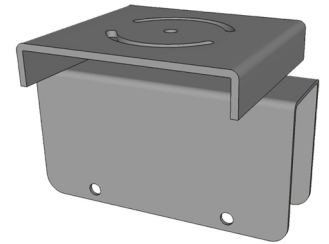
LEFT
END POST



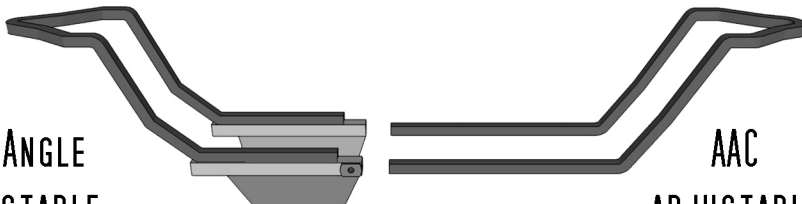
CONNECTOR POST
(FOR ADD-ON ONLY)



RIGHT
END POST

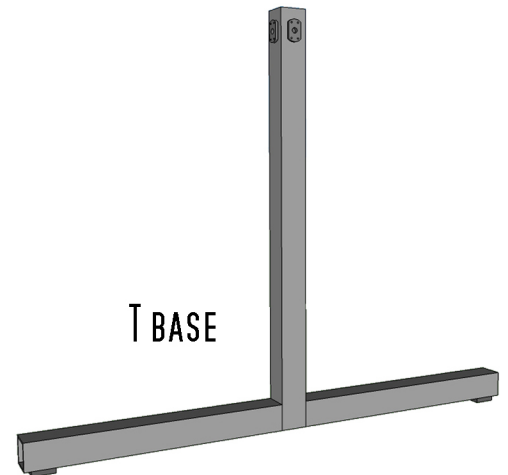


SLIDE



ANY ANGLE
ADJUSTABLE
CRADLE

AAC
ADJUSTABLE
CATCH



T BASE

CRADLE RAIL SPACING

WALL FORMAT

RAIL LENGTH	CRADLES	INCHES BETWEEN SLIDES	INCHES FROM END OF RAIL
108"	8	8 7/16"	3 1/2"
98"	7	9 3/16"	3 1/2"
88"	6	10 3/16"	3 1/2"

ISLAND FORMAT

RAIL LENGTH	CRADLES	INCHES BETWEEN SLIDES	INCHES FROM END OF RAIL
108"	11	4 1/8"	3 1/2"
98"	10	4 1/8"	3 1/2"
88"	9	4 1/8"	3 1/2"

HARDWARE

5/16" x 1/2" BOLTS

1/4" x 1/2" BOLTS

1/4" WASHERS

1/4" x 3/4" BOLTS

1/4" NYLON STOPNUT

3/8" SETCREW

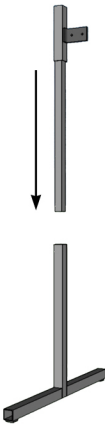
1 1/4" BLACK PLUGS

DAVIES KNOBS

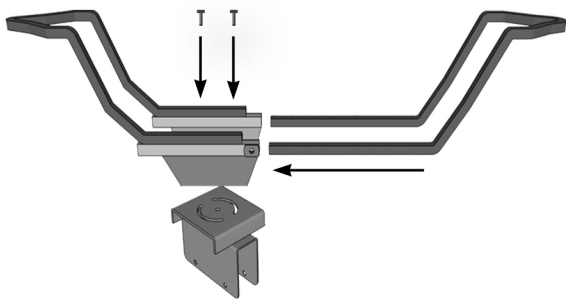
RUDY RACK STICKER

SUI.2 ASSEMBLY INSTRUCTIONS

1. LOCATE THE END POSTS AND THE T BASES, INSERT THE END POSTS INTO THE T BASES, AS SHOWN IN THE DIAGRAM TO THE LEFT. ADJUST TO DESIRED HEIGHT AND SECURE USING 5/16" DAVIES KNOBS.



2. SLIDE THE ENDS OF THE RAIL OVER THE EARS ON THE END POSTS. SECURE USING 5/16" x 1/2" BOLTS AND 5/16" WASHERS.



3. CRADLE SUB ASSEMBLY

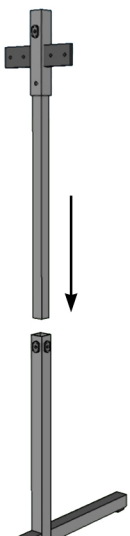
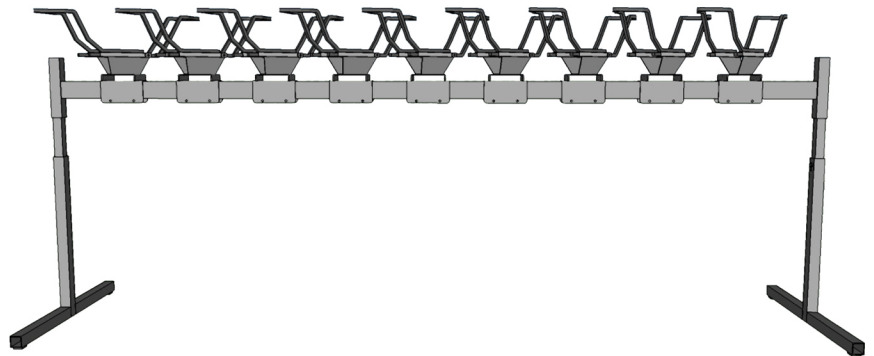
LOCATE A CRADLE AND A CATCH, INSERT THE CATCH INTO THE 1/2" TUBES ON THE CRADLE AS SHOWN TO THE LEFT, SECURE WITH A 1/4" x 3/8" SET SCREW.

NEXT USING A 1/4" x 3/4" BOLT SLIDE A 1/4" WASHER ON THE BOLT AND THEN INSERT THE BOLT AND WASHER ASSEMBLY THROUGH ONE OF THE HOLES ON THE CRADLE, THEN THROUGH THE CORRESPONDING SEMI CIRCLE SLOT ON THE SLIDE. THEN ADD ANOTHER 1/4" WASHER AND A 1/4" NYLON STOP NUT. REPEAT THIS FOR THE OTHER SIDE OF THE CRADLE.

NOW DETERMINE THE ANGLE YOU WOULD LIKE YOUR CRADLE AT AND TIGHTEN DOWN THE LOCK NUTS. REPEAT FOR ALL CRADLE SUBASSEMBLIES.

4. TAKE THE CRADLE SUBASSEMBLIES AND SLIDE THEM OVER THE RAIL (SPACING THEM ACCORDING TO THE MODEL AND FORMAT DESCRIBED IN THE TABLE ON PAGE 1) SECURING THEM IN PLACE USING 1/4" x 1 3/4" BOLTS AND 1/4" NYLON LOCK NUTS.

THE FINAL STEP IS TO INSERT THE PROVIDED PLUGS INTO THE EXPOSED TUBE STEEL ENDS TO GIVE IT THE FINISHED LOOK.



FOR SUI.2 ADD-ON SECTIONS: REPEAT STEP 1 AND 2 WITH THE PROVIDED CONNECTOR POST IN PLACE OF THE END POST. THEN CONTINUE ON WITH STEPS 3 AND 4.

