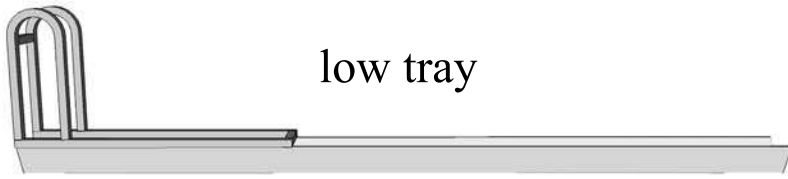
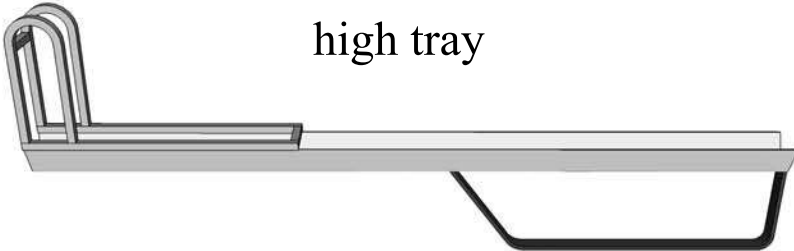


# Kids Wall Double Decker

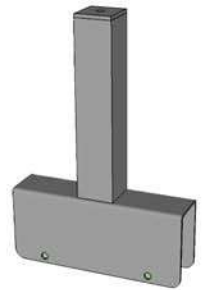


low tray



high tray

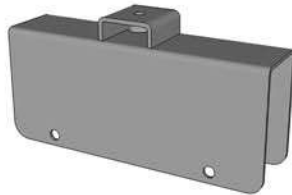
top high slide



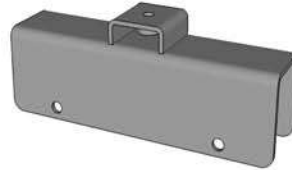
safety stop



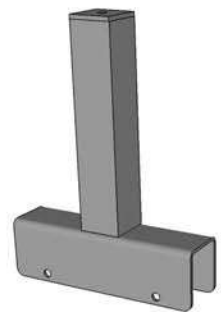
top low slide



bottom low slide



bottom high slide



bottom crossbar



top crossbar



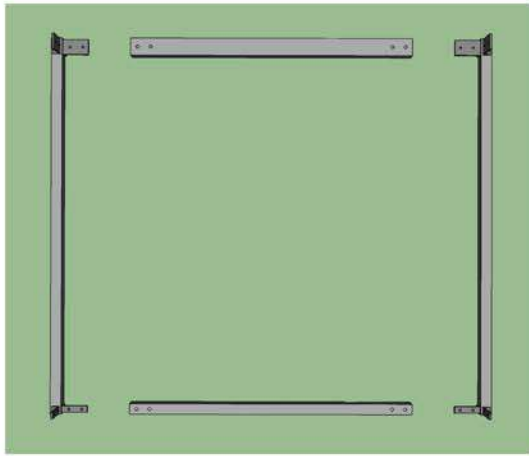
corner post



bottom rail



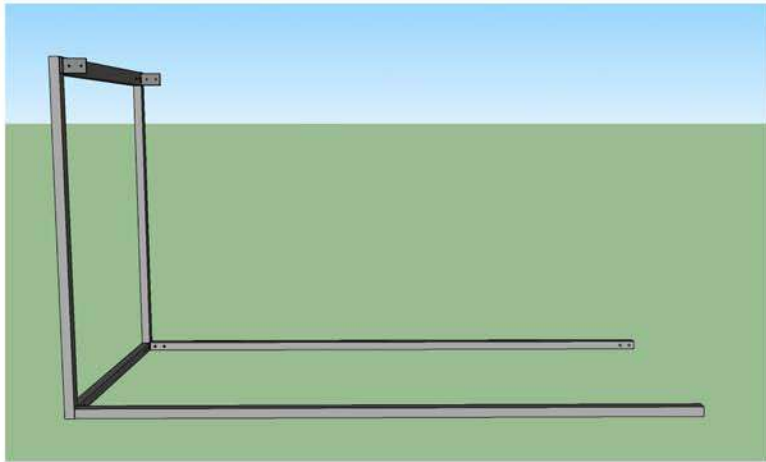
top rail



## step 1

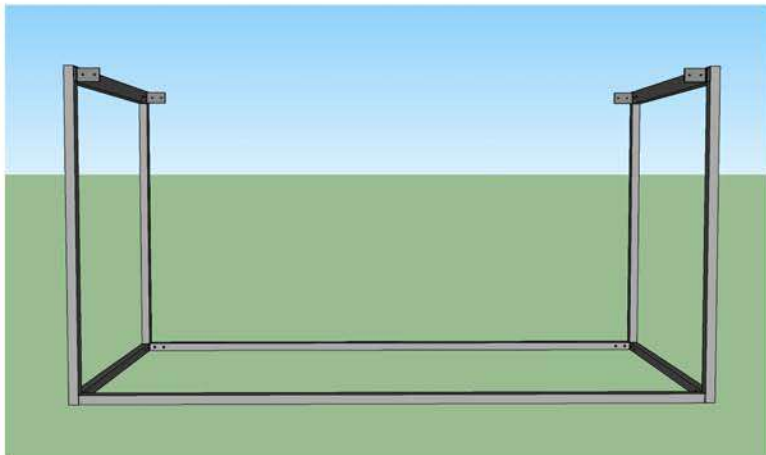
Locate your corner posts and top and bottom crossbars. Lay out the two corner posts and a top and bottom crossbar as shown flat on the floor. Slide the ears from the corner posts into the ends of the crossbars and secure using 5/16" x 1/2" bolts and washers, **tighten all bolts down.**

Repeat with remaining corners and cross bars, creating two end subassemblies



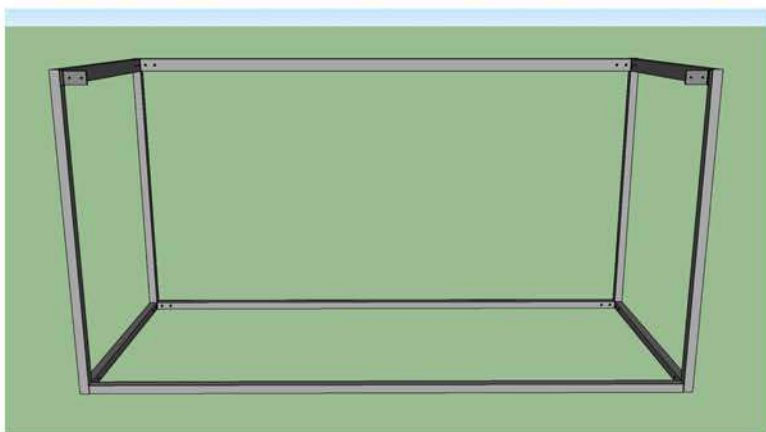
## step 2

Next locate your bottom rails. Take one of the now assembled end sections and stand it up with the small ears on the bottom, slide the bottom rails over the ears and align the holes as shown. Using 5/16" x 1/2" bolts secure bottom rails to end assembly, **do not tighten down!**



## step 3

repeat step 2 with remaining end subassembly, as shown.



## step 4

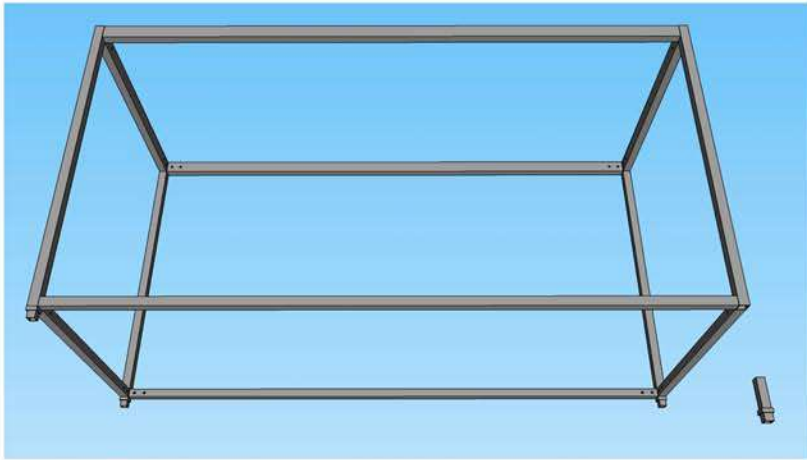
Next take one of the top rails and slide one end of the rail over one of the remaining exposed ears. then slide the other end of the rail over the corresponding ear on the other end, as shown. Secure the rail to the end posts using 5/16" x 1/2" bolts and 5/16" washers, **do not tighten down.**



## step 5

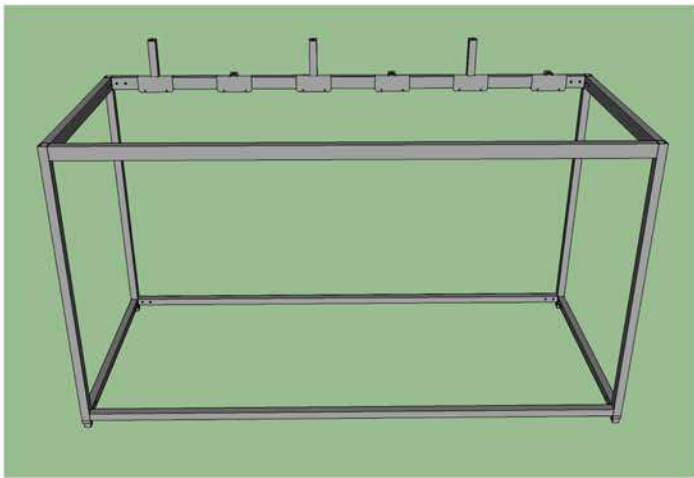
Repeat step 4, securing the remaining rail to the cornerposts, as shown.

***Go back and tighten all bolts on the structure down securely!***



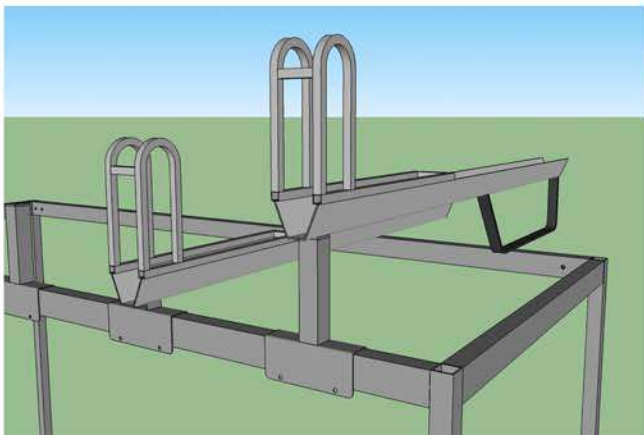
## STOP

If you have a rack with trays on both tiers you should have received 4 extra safety stops. Take the safety stops and slide them into the bottom of the corner posts one at a time, as shown, giving the rack “feet”.



## step 6

Take your top high and top low slides and slide them onto the rail as shown. Space them roughly  $3 \frac{3}{4}$ ” from the ends of the rail and  $7 \frac{5}{8}$ ” from each other. Once satisfied with the spacing secure tightly to the rail using  $\frac{1}{4}$ ” x  $1 \frac{3}{4}$ ” bolts and  $\frac{1}{4}$ ” nylon lock nuts.



## step 7

Finally take the high and low trays and attach them to their matching slides, as shown, using  $\frac{5}{16}$ ” x  $\frac{1}{2}$ ” (low slides) and  $\frac{5}{16}$ ” x  $\frac{3}{4}$ ” (high slides) bolts and  $\frac{5}{16}$ ” washers to tightly secure the trays to the slides.

For racks with trays on both tiers, repeats steps 6 & 7 using bottom low and high slides for the trays on the bottom tiers.